

streets ahead
NEW HOMES

PAMPISFORD ROAD BROCHURE

To book a viewing call 020 8655 4780
landandnewhomes@streetsahead.info
www.streetsahead.info



PAMPISFORD
ROAD

A selection of two bedroom luxury apartments
in a fantastic location, perfect for those looking
to commute.

PAMPISFORD ROAD

About.

Pampisford Road is located in a quaint but central neighbourhood in a fantastic location only 13 miles from central London in Zone 6. Pampisford Road offers great road links via the M23, M25 and A23 which make Gatwick Airport, London and East Sussex a breeze to get to.

6

2 bedroom
apartments

£430,000

apartments
priced from



PAMPISFORD ROAD

Apartments.

150 Pampisford Road boasts open plan living / kitchen / dining rooms with French doors opening to your own Veranda style balcony or private patio. Each apartment offers two good sized bedrooms, one with its own en-suite bathroom, ample storage and a further modern 3 piece bathroom suite.

Externally, you can find residential parking and a well kept communal garden.

PAMPISFORD ROAD

Transport.

Go from sleepy countryside to bustling city centre in less than half an hour, making this a top location for those wishing to commute. Purley Oaks and Purley mainline stations are within close proximity, making the daily commute a breeze, with frequent services to London Bridge and London Victoria.

PAMPISFORD ROAD

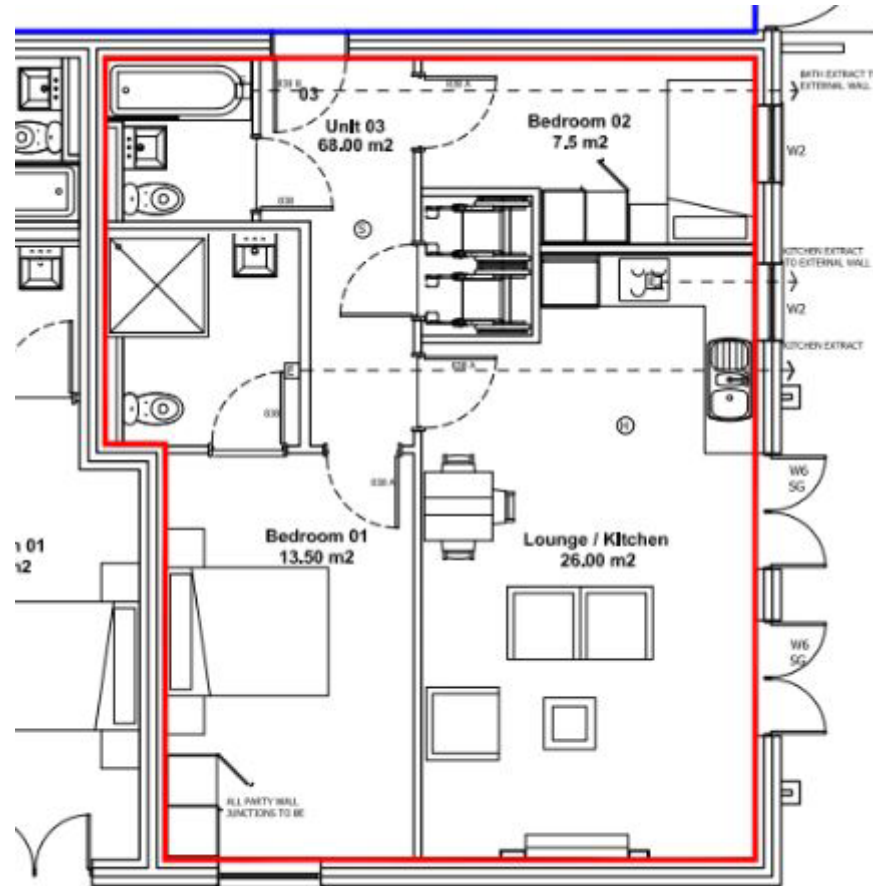
Area.

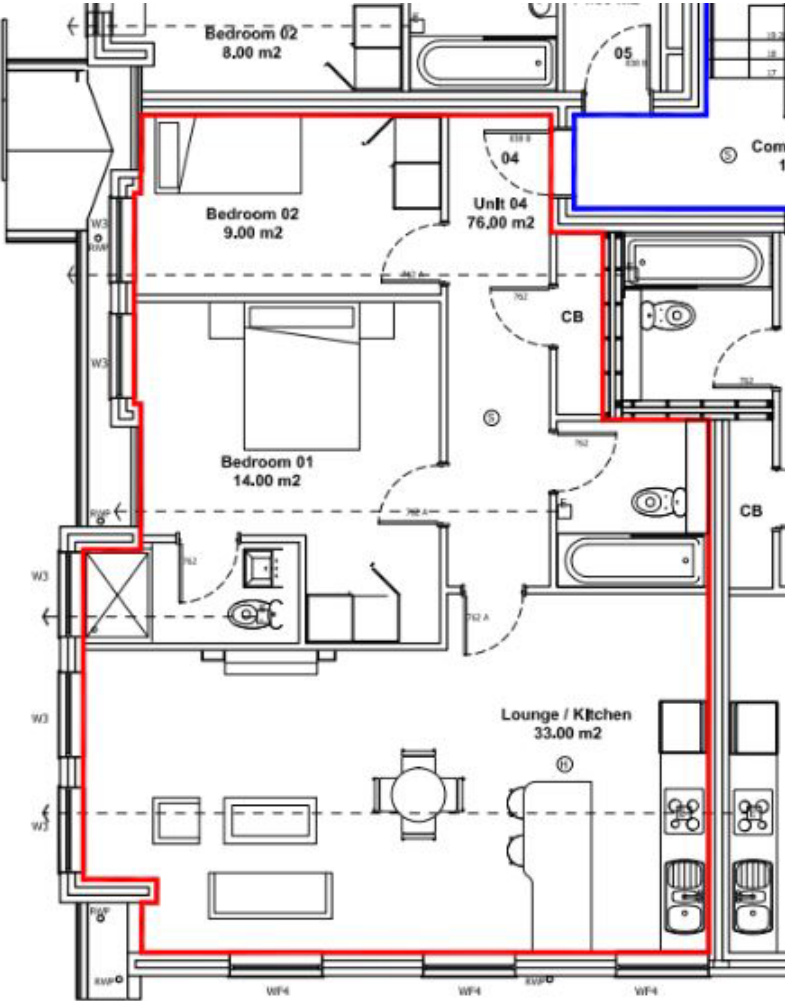
Pampisford is located in in South Croydon, within close proximity to Purley - a suburban neighbourhood that has often been described as a 'suburban utopia' by many. With great schools, quiet streets, and great transport links to London 24 hours a day, it is the perfect place to live for those looking for a combination of excellent transport links and plenty of green space.

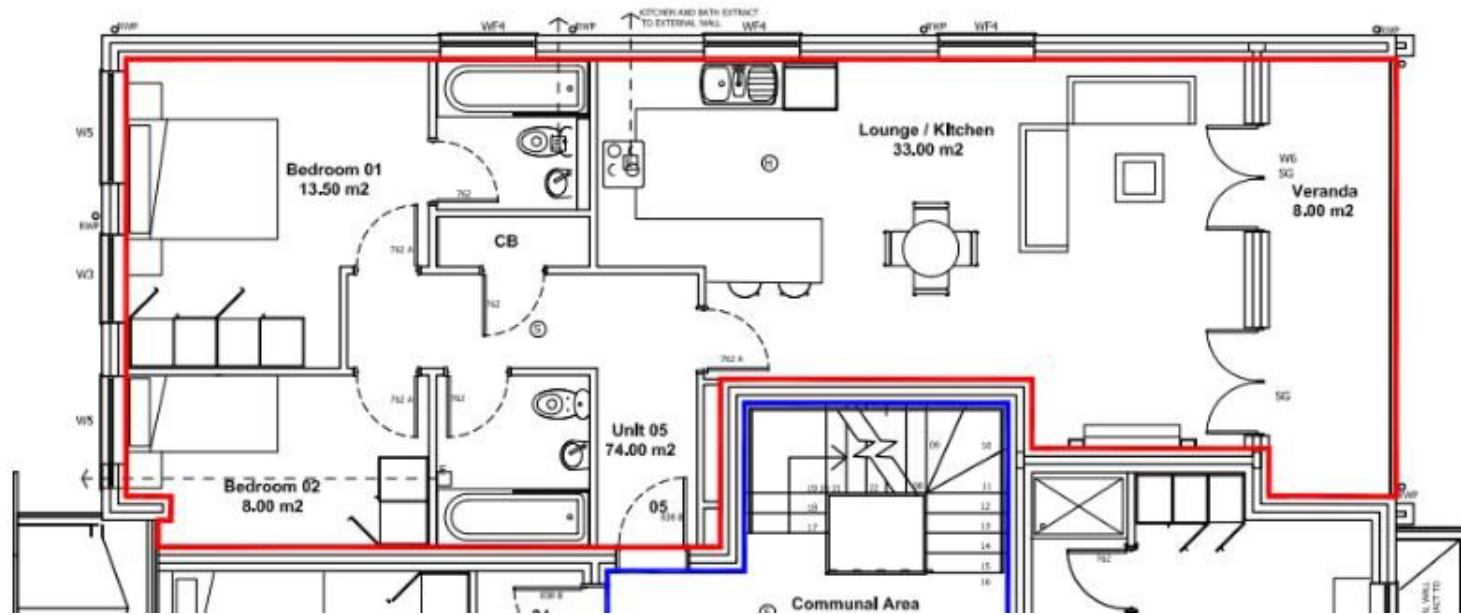


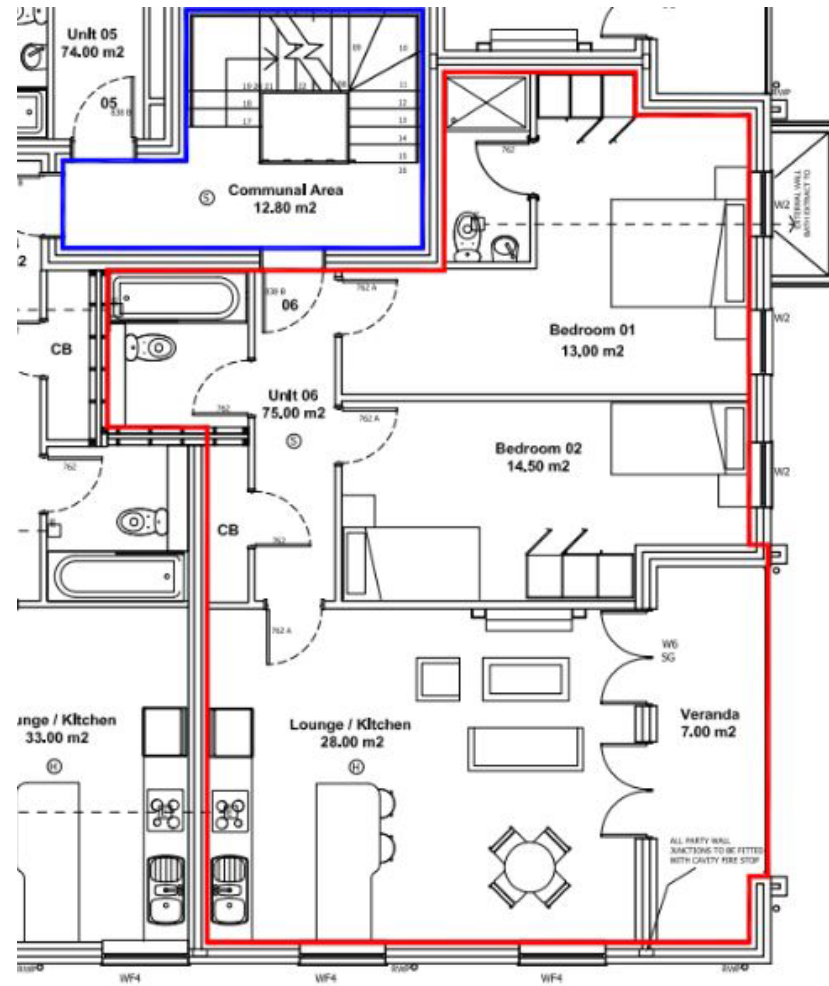
PAMPISFORD ROAD

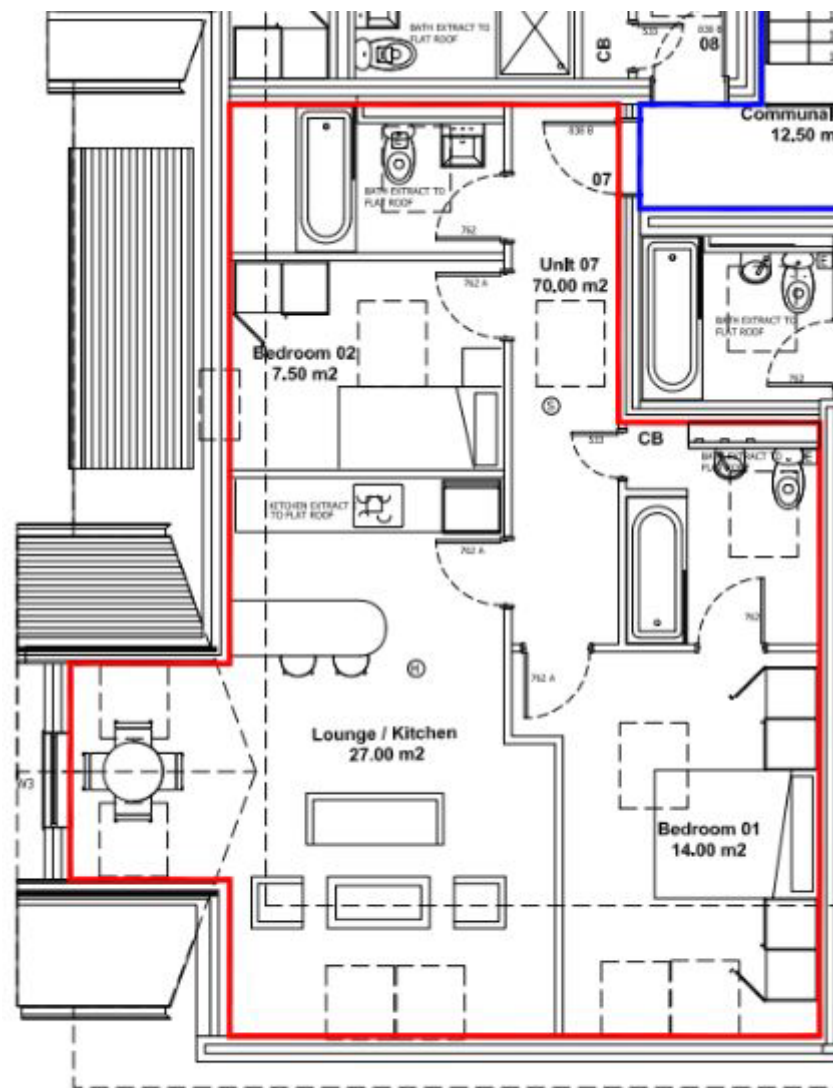
Floorplans.

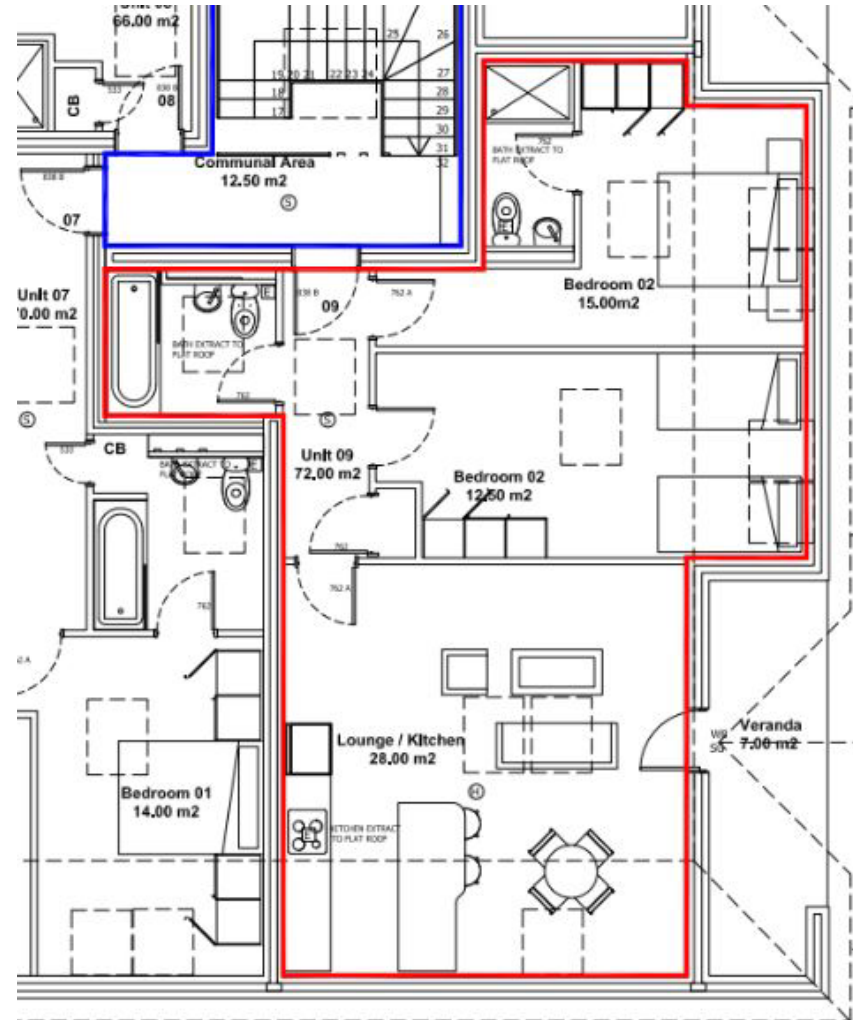












Enquiries.

Address: 219-221 Lower Addiscombe Road, Croydon, CR0 6RB

Telephone: 020 8655 4780

Email: landandnewhomes@streetsahead.info

Every care has been taken in the preparation of this brochure. The details contained herein are for guidance only and should not be relied upon as exactly describing any of the material illustrated or written by any order under the Consumer Protection from Unfair Trading Regulations 2008. This information does not constitute a contract, part of a contract or warranty. The developer operates a programme of continuous product development. Features, internal and external, may vary from time to time and may differ from those shown in the brochure. Pampisford Road is a marketing name and may not form part of the postal address for these properties. Amenity spaces are subject to planning consent. Digital illustrations and any computer generated images are indicative only. Details correct at time of publishing, June 2022.

