

streets ahead
NEW HOMES

OAKBRIDGE HOUSE BROCHURE

Call 020 8655 4780
landandnewhomes@streetsahead.info
www.streetsahead.info



OAKBRIDGE
HOUSE

WALLINGTON

An exclusive collection of
9 stunning 1, 2 & 3 bedroom apartments
set in a prestigious corner location
overlooking Woodcote green.

OAKBRIDGE HOUSE

About.

Situated in the leafy suburbs of Wallington, Oakbridge House is surrounded by an abundance of greenery with the beautiful gardens of Woodcote Green located on its doorstep.

9

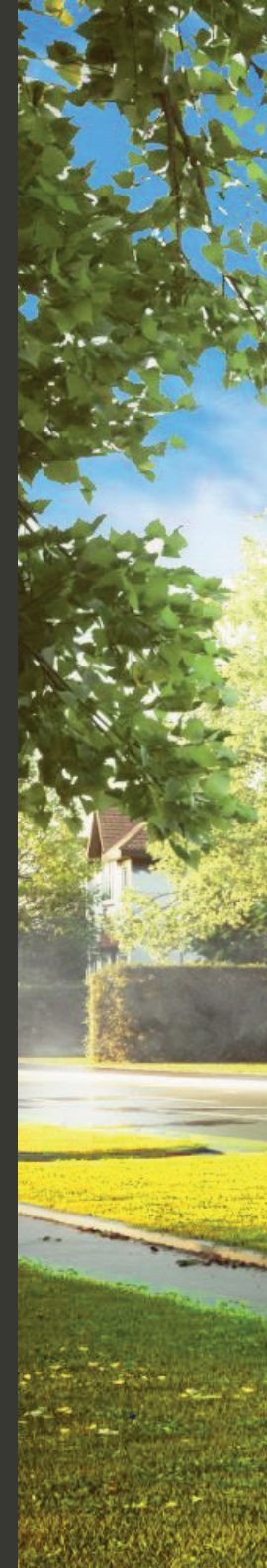
1, 2 & 3 bedroom
apartments

£450,000

2 bedroom apartments
priced from

£550,000

3 bedroom apartments
priced from





OAKBRIDGE HOUSE

Apartments.

Each apartment boasts a unique layout featuring an open plan living/kitchen area, a generous balcony or patio and a luxury en-suite to the master bedroom.

Each apartment will come with its own private parking space.







OAKBRIDGE HOUSE

Transport.

The available transport links are vast. As well as having main bus routes on your doorstep, you are also less than a mile away from Wallington Train Station which will get you to Central London in 26 minutes.

Area.

The area has an array of schools and nurseries, ranging from infant schools to secondary schools with Ofsted ratings of Good & Outstanding. Living in this location will put you in the catchment area for prestigious schools such Wallington High School for Girls, Wallington Country Grammar School for Boys, The John Fisher School and the private Whitgift School.



OAKBRIDGE HOUSE

Floorplans.



MEASUREMENTS

Ground Floor

Kitchen & Lounge

5.80m x 4.85m

Bedroom 1

2.90m x 5.25m

Bedroom 2

3.95m x 3.00m

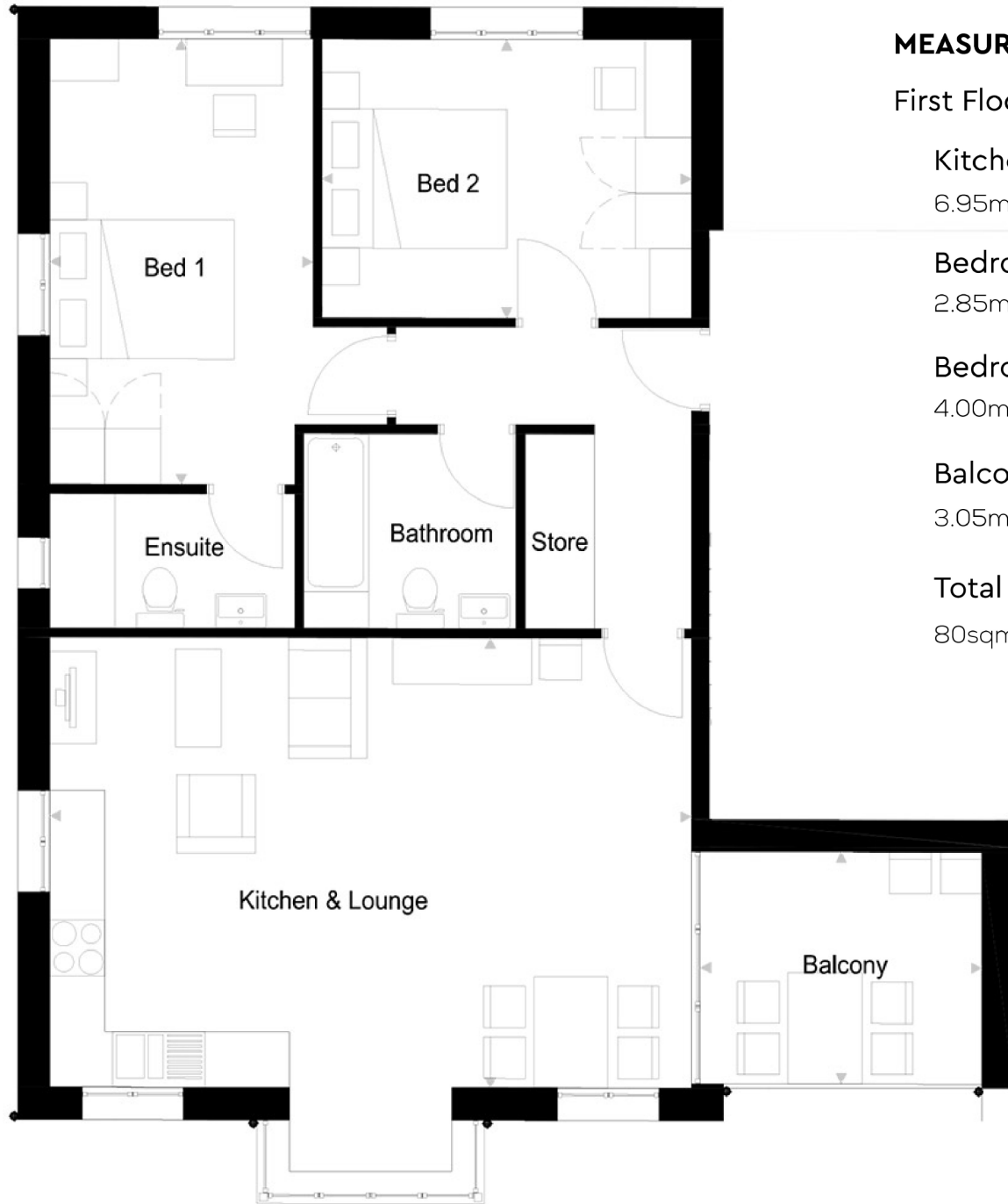
Bedroom 3

4.35m x 2.25m

Total floor space

88sqm

Apartment 1.



MEASUREMENTS

First Floor

Kitchen & Lounge

6.95m x 4.85m

Bedroom 1

2.85m x 4.80m

Bedroom 2

4.00m x 3.00m

Balcony

3.05m x 2.50m

Total floor space

80sqm

Apartment 2.

MEASUREMENTS

Second Floor

Kitchen & Lounge

6.43m x 3.84m

Bedroom 1

3.71m x 3.08m

Bedroom 2

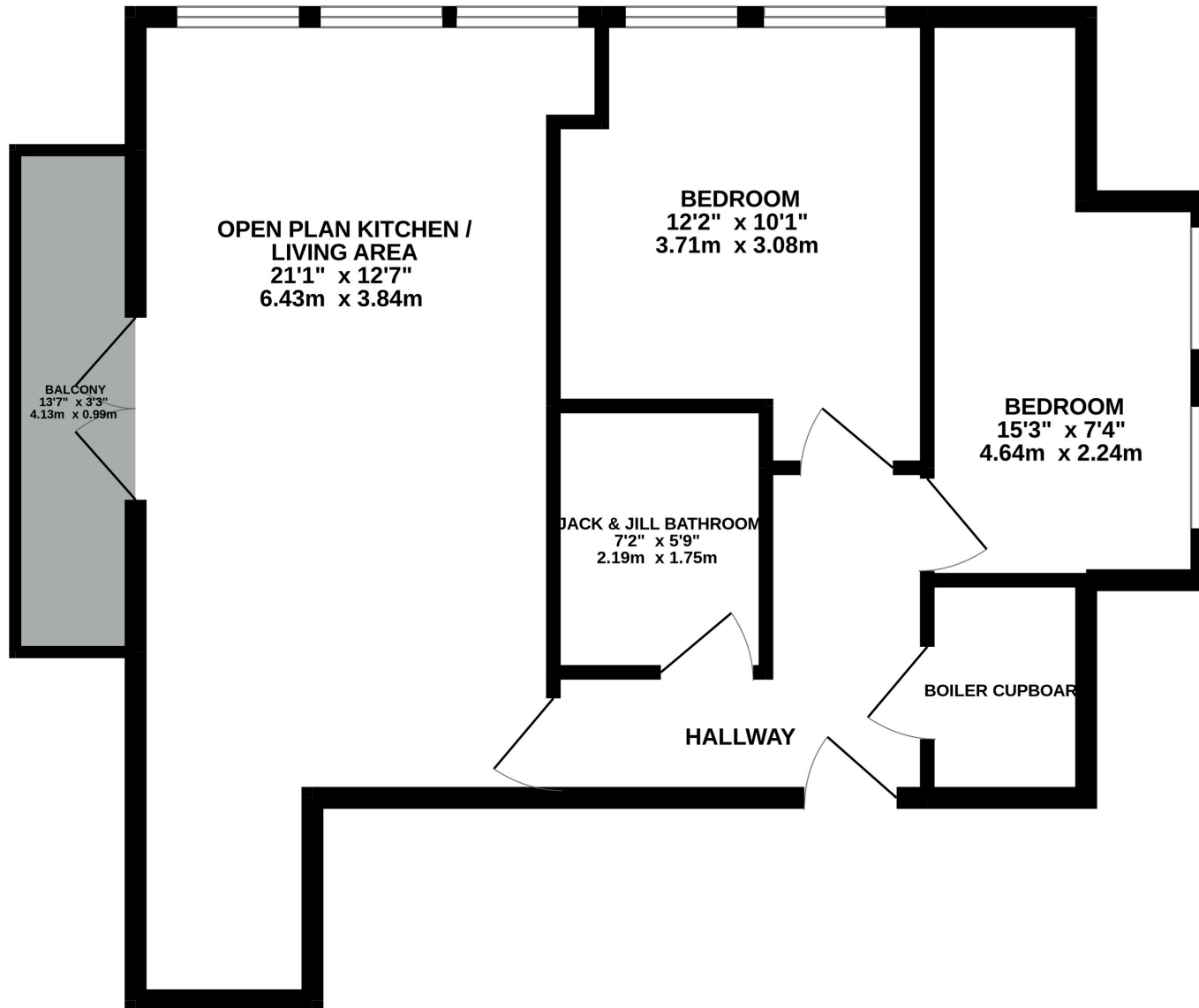
4.64m x 2.24m

Balcony

4.13m x 0.99m

Total floor space

55.7sqm



Apartment 3.



MEASUREMENTS

Ground Floor

Kitchen & Lounge

5.80m x 4.85m

Bedroom 1

2.90m x 5.25m

Bedroom 2

3.95m x 3.00m

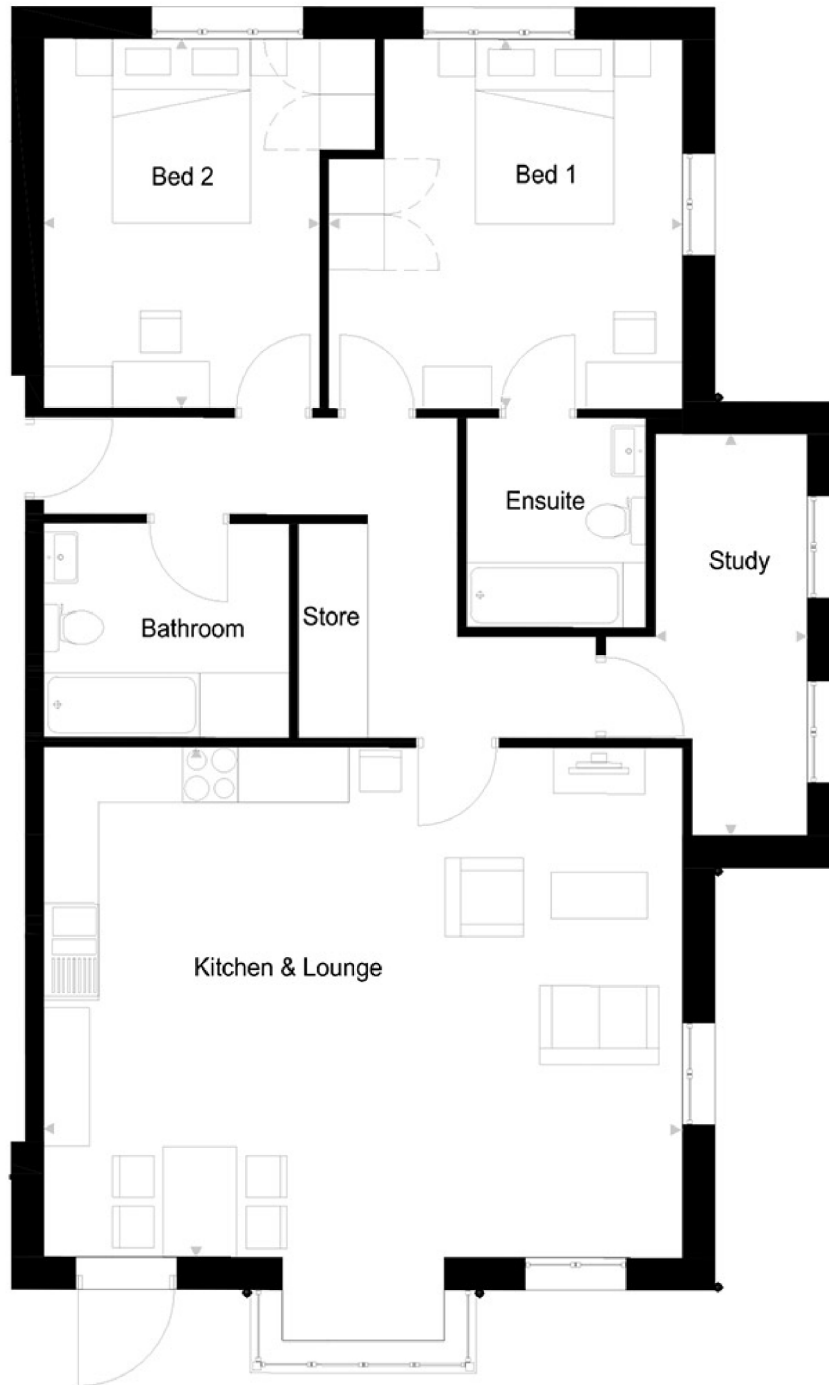
Bedroom 3

4.35m x 2.25m

Total floor space

88sqm

Apartment 4.



MEASUREMENTS

Ground Floor

Kitchen & Lounge

6.95m x 5.53m

Bedroom 1

3.85m x 4.00m

Bedroom 2

3.00m x 4.00m

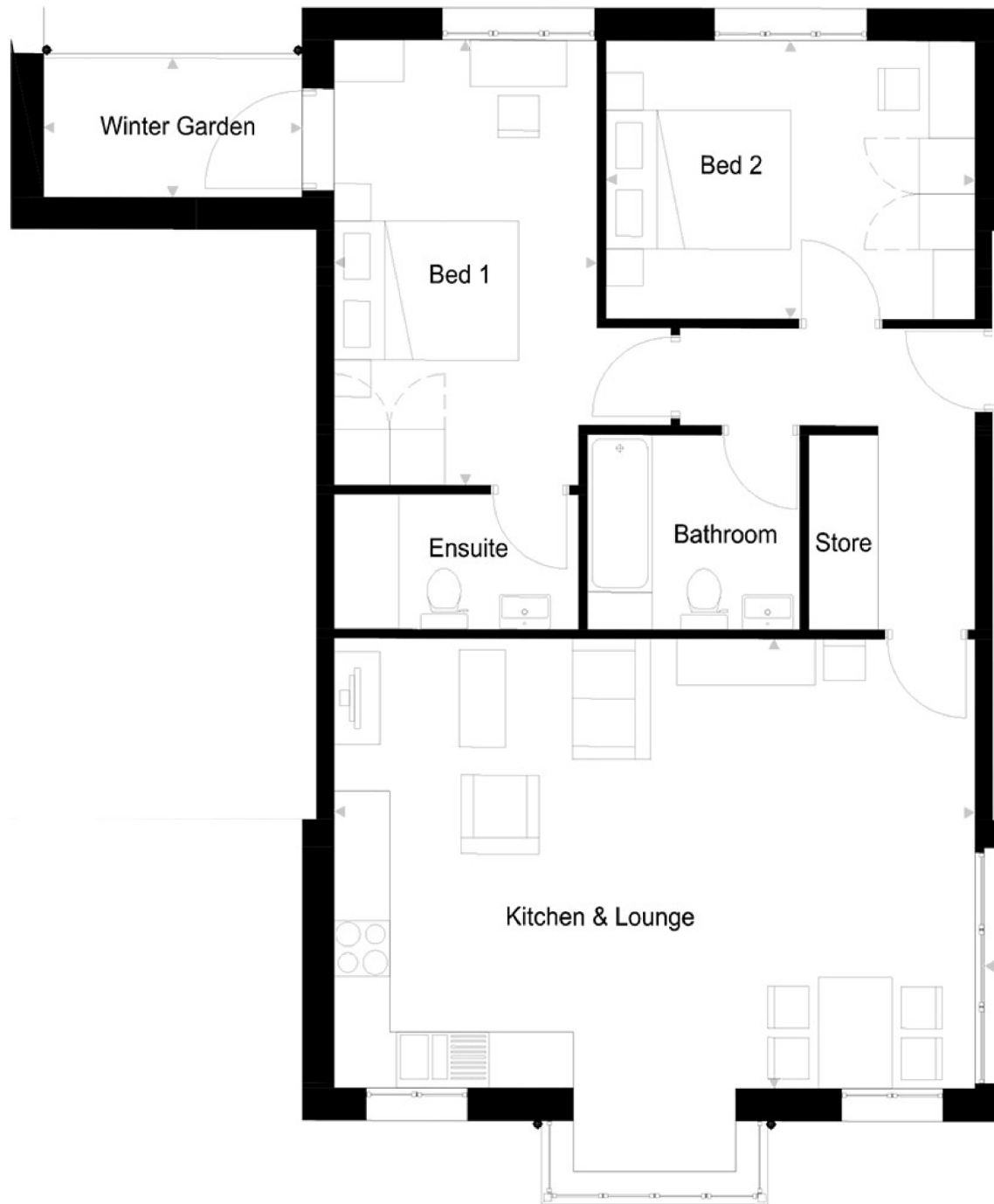
Study

1.65m x 4.36m

Total floor space

99sqm

Apartment 5.



MEASUREMENTS

Ground Floor

Kitchen & Lounge

6.95m x 4.85m

Bedroom 1

2.85m x 4.80m

Bedroom 2

4.00m x 3.00m

Balcony

3.05m x 2.55m

Winter Garden

2.80m x 1.50m

Total floor space

80sqm

Apartment 6.



MEASUREMENTS —————

Ground Floor

Kitchen & Lounge

6.95m x 4.00m

Bedroom 1

3.85m x 4.00m

Bedroom 2

3.00m x 4.00m

Bedroom 3

1.65m x 4.36m

Balcony

6.95m x 1.75m

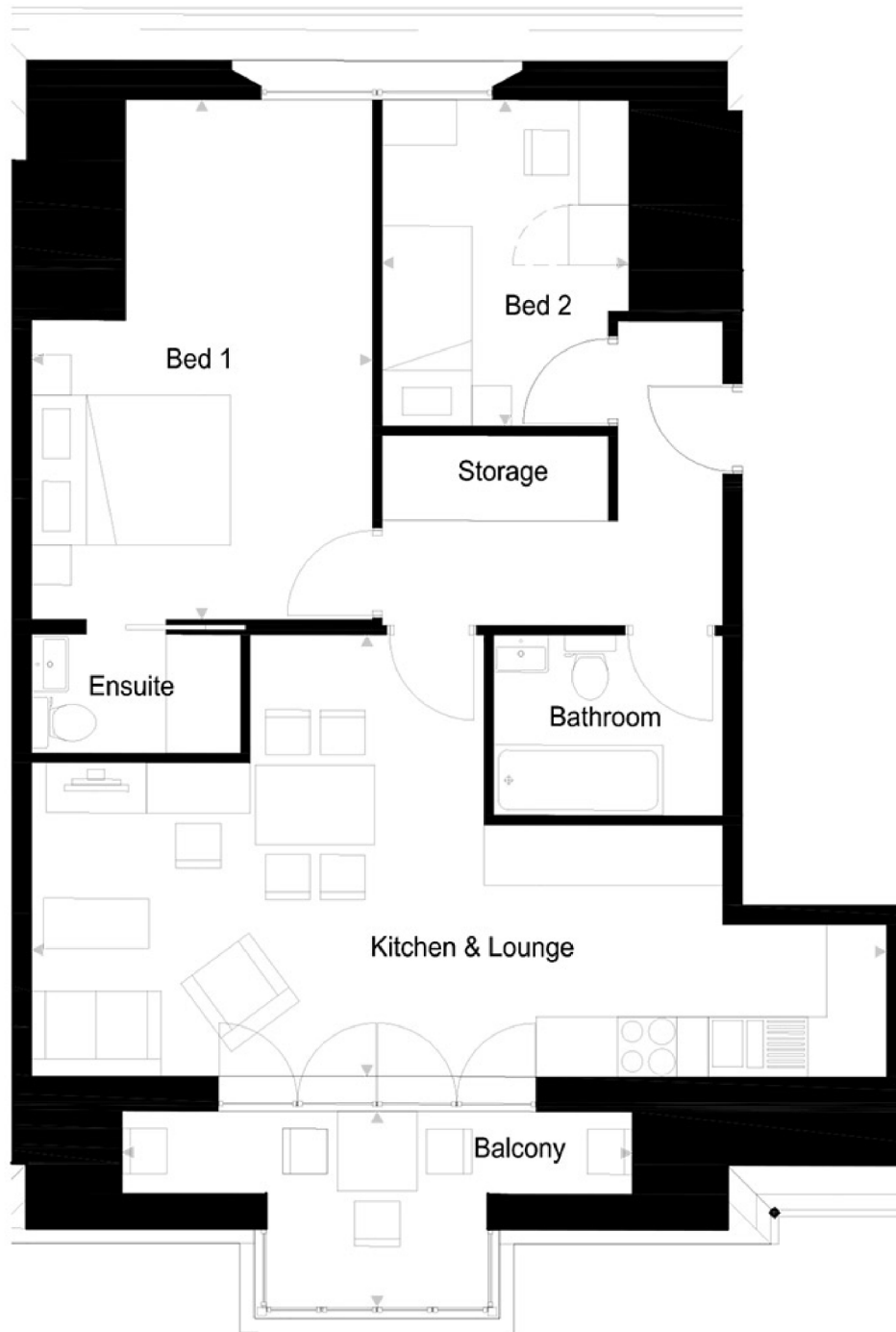
Winter Garden

2.80m x 1.50m

Total floor space

87sqm

Apartment 7.



MEASUREMENTS

First Floor

Kitchen & Lounge

8.60m x 4.42m

Bedroom 1

3.85m x 4.00m

Bedroom 2

2.58m x 3.26m

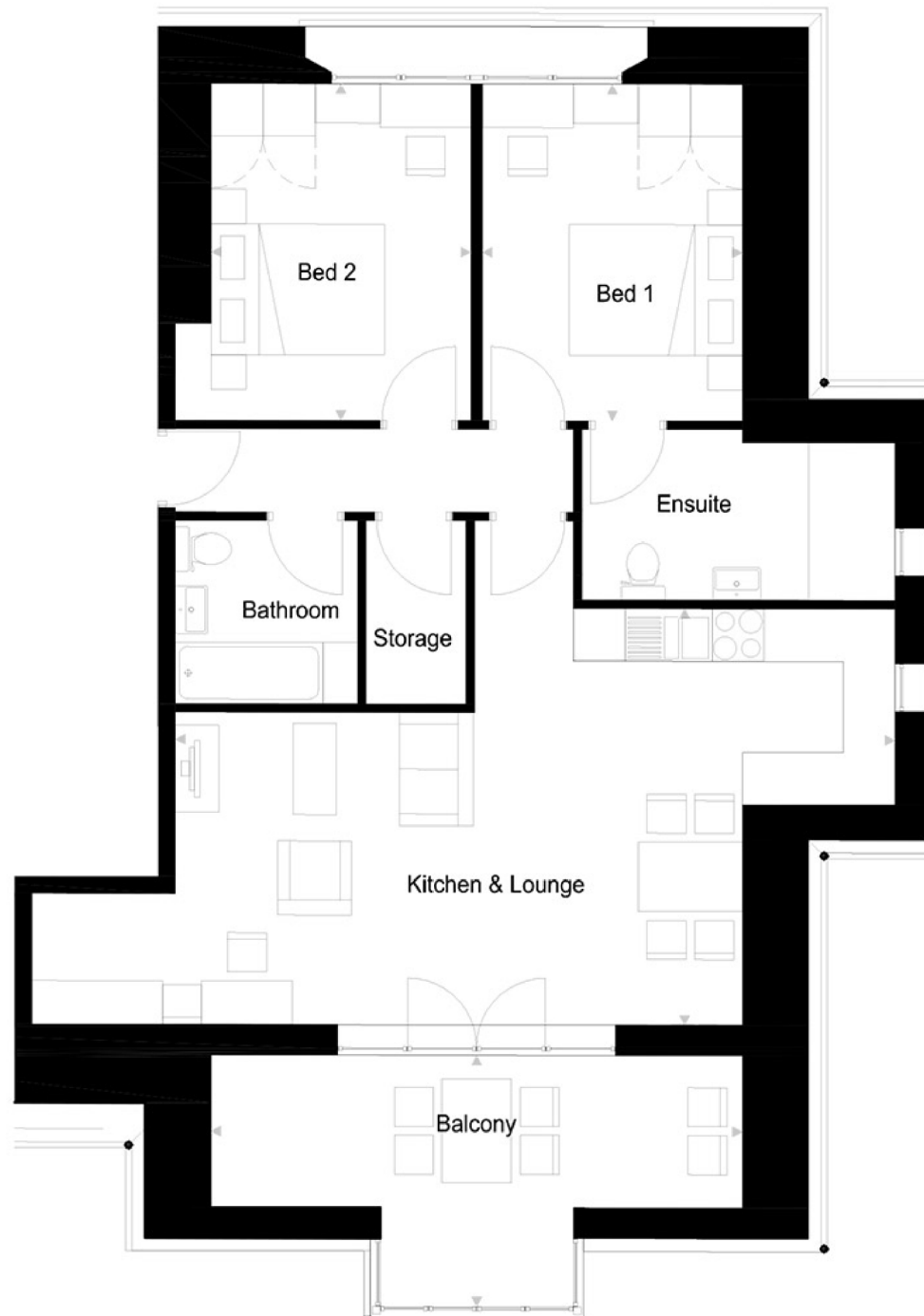
Balcony

5.13m x 1.96m

Total floor space

67sqm

Apartment 8.



MEASUREMENTS

First Floor

Kitchen & Lounge

8.30m x 4.78m

Bedroom 1

3.00m x 3.86m

Bedroom 2

3.00m x 3.86m

Balcony

6.13m x 2.89m

Total floor space

79sqm

Apartment 9.

Enquiries.

Address: 219-221 Lower Addiscombe Road, Croydon, CR0 6RB

Telephone: 020 8655 4780

Email: landandnewhomes@streetsahead.info

Every care has been taken in the preparation of this brochure. The details contained herein are for guidance only and should not be relied upon as exactly describing any of the particular material illustrated or written by any order under the Consumer Protection from Unfair Trading Regulations 2008. This information does not constitute a contract, part of a contract or warranty. The developer operates a programme of continuous product development. Features, internal and external, may vary from time to time and may differ from those shown in the brochure. Oakbridge House is a marketing name and may not form part of the postal address for these properties. Amenity spaces are subject to planning consent. Digital illustrations and any computer generated images are indicative only. Details correct at time of publishing, June 2022.

