

streets ahead
NEW HOMES

FOXLEY LANE BROCHURE

To book a viewing call 020 8655 4780
landandnewhomes@streetsahead.info
www.streetsahead.info

61
FOXLEY
LANE

A selection of brand new two
and three bedroom apartments,
situated on the popular Foxley Lane, Purley.

FOXLEY LANE

About.

These apartments have been developed with the highest specification in mind, offering fabulous open plan kitchen / living / dining areas, leading to a winter balcony which is perfect to enjoy during all weather conditions.

9

2 & 3 bedroom
apartments

£450,000

2 bedroom apartments
priced from

£575,000

3 bedroom apartments
priced from





FOXLEY LANE

Apartments.

These fantastic apartments are built to a very high standard, with brick and block construction, providing extra protection and noise reduction between flats.

Some further features include a underfloor heating throughout using Mitsubishi air source heat pumps – perfect for energy saving, a lift to all floors and LVT flooring.

Boasting lovely communal gardens, these apartments also offer residents parking with electric car charging available.







FOXLEY LANE

Transport.

Foxley Lane is a very sought after road in the heart of Purley, known for its popular mainline train station with fast and frequent services to London Bridge and London Victoria, providing effortless journeys for commuters.

FOXLEY LANE

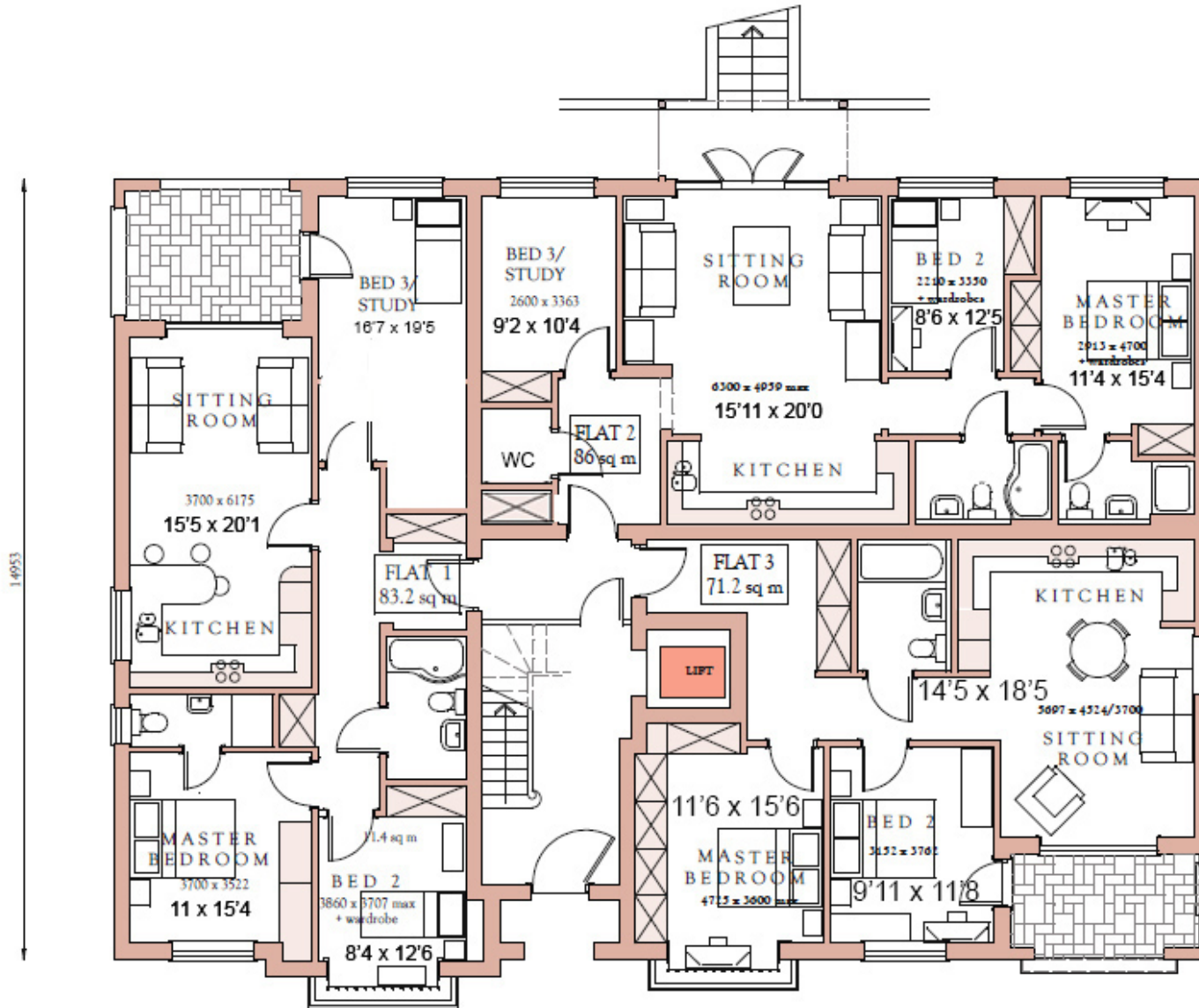
Area.

Purleys suburban neighbourhood is a very sought-after area that has often been described as a 'suburban utopia' by many. With great schools, quiet streets, and great transport links to London 24 hours a day, it is the perfect place to live for those looking for a combination of excellent transport links and plenty of green space.

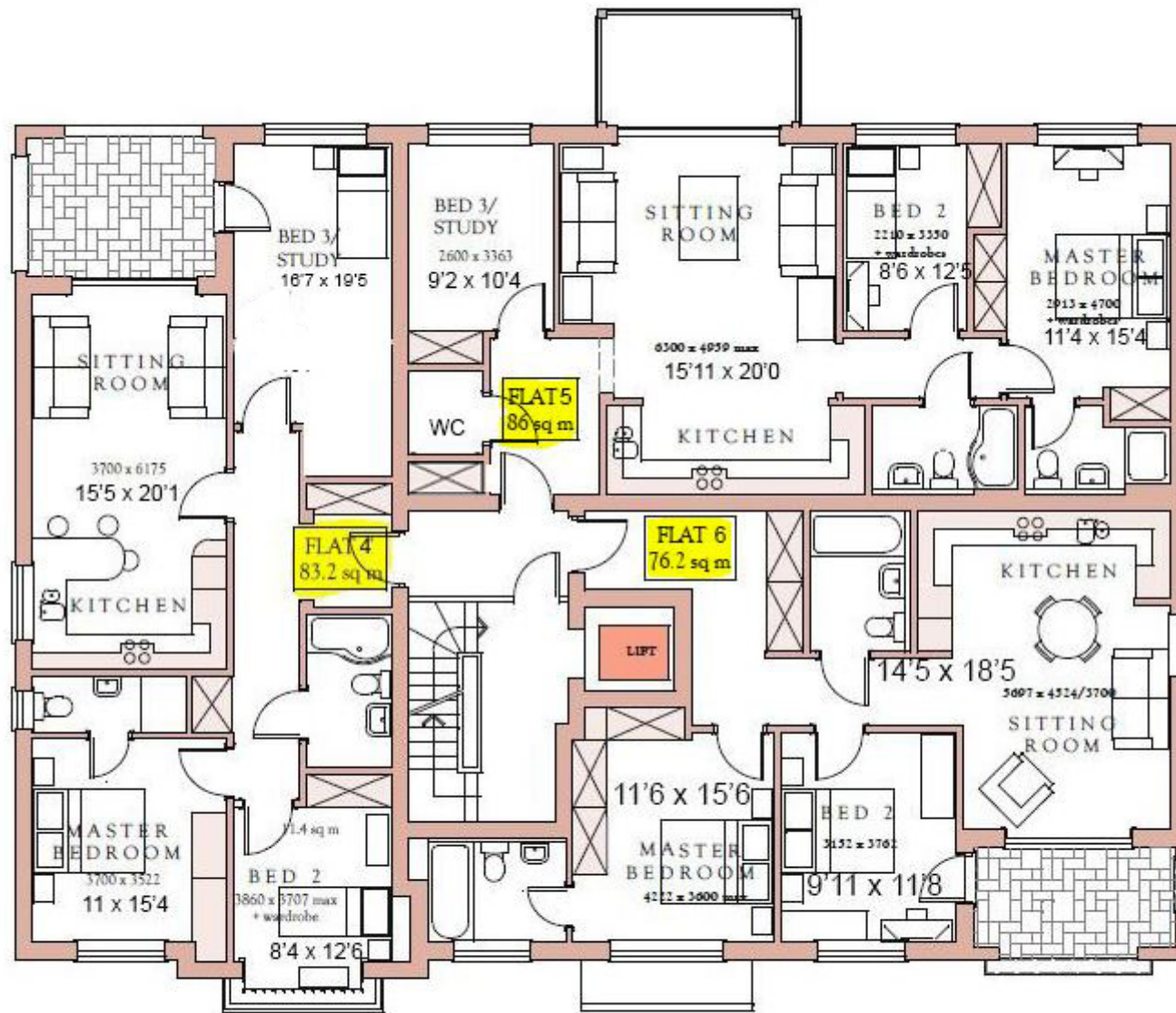


FOXLEY LANE

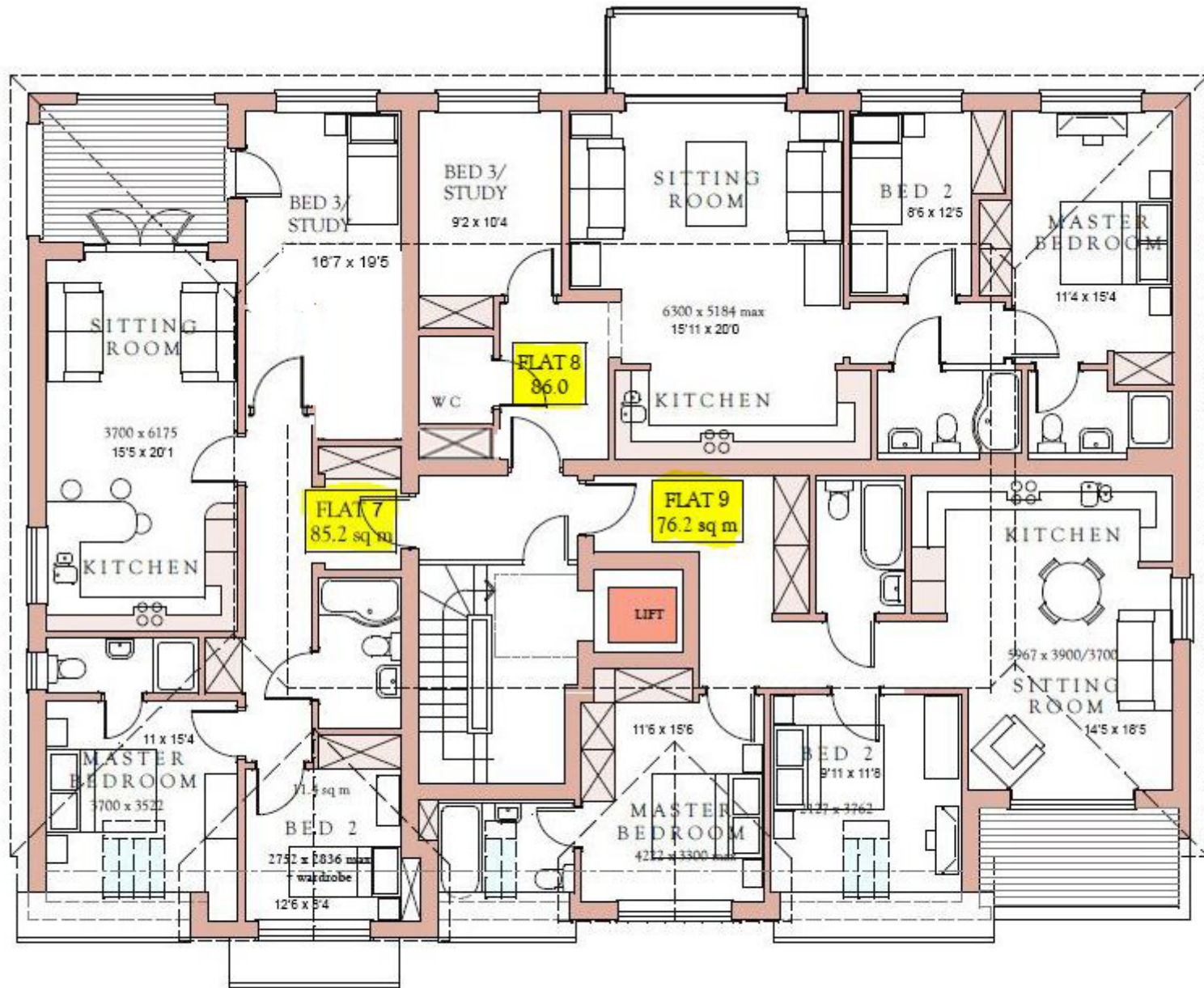
Floorplans.



GROUND FLOOR PLAN



FIRST FLOOR PLAN



SECOND FLOOR PLAN

Enquiries.

Address: 219-221 Lower Addiscombe Road, Croydon, CR0 6RB

Telephone: 020 8655 4780

Email: landandnewhomes@streetsahead.info

Every care has been taken in the preparation of this brochure. The details contained herein are for guidance only and should not be relied upon as exactly describing any of the particular material illustrated or written by any order under the Consumer Protection from Unfair Trading Regulations 2008. This information does not constitute a contract, part of a contract or warranty. The developer operates a programme of continuous product development. Features, internal and external, may vary from time to time and may differ from those shown in the brochure. Foxley Lane is a marketing name and may not form part of the postal address for these properties. Amenity spaces are subject to planning consent. Digital illustrations and any computer generated images are indicative only. Details correct at time of publishing, June 2022.

